

17

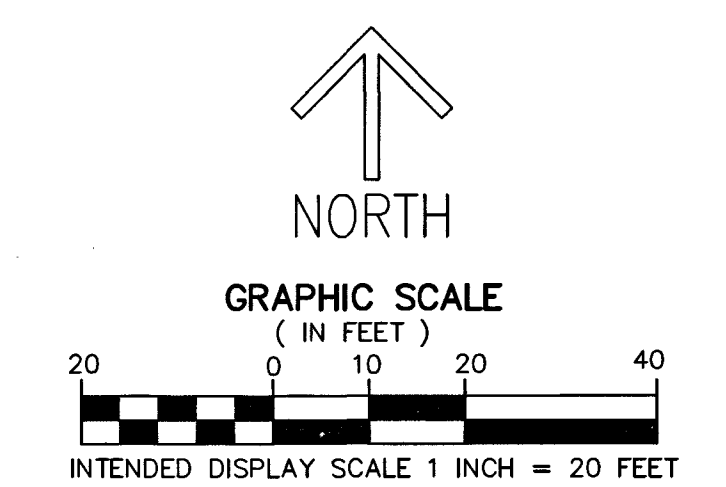
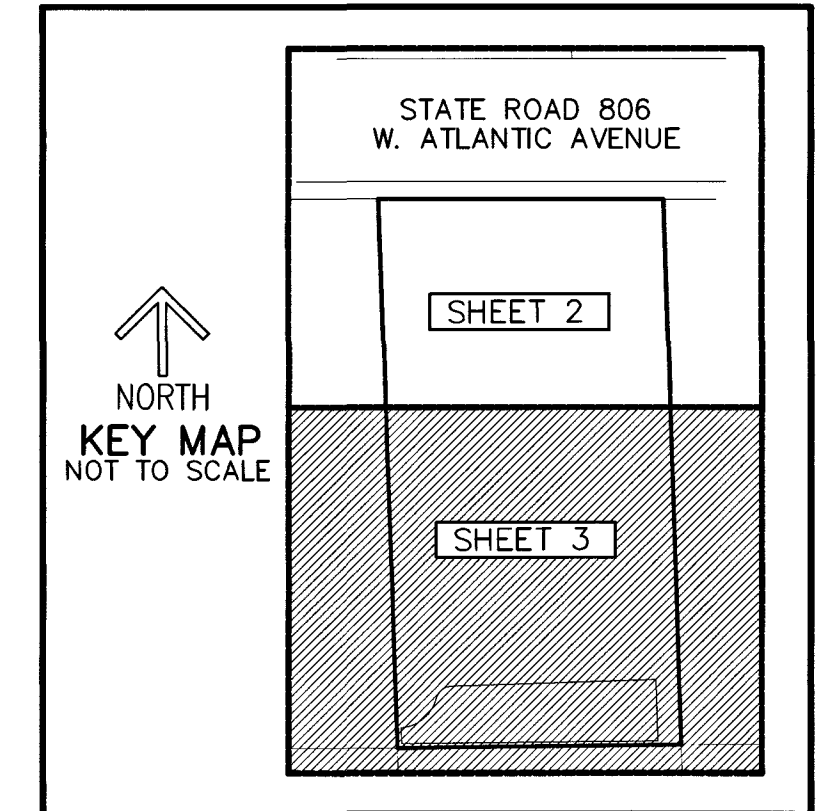
THIS INSTRUMENT PREPARED BY
DAVID P. LINDLEY
OF
CAULFIELD and WHEELER, INC.
SURVEYORS - ENGINEERS - PLANNERS
7900 GLADES ROAD, SUITE 100
BOCA RATON, FLORIDA 33434 - (561)392-1991

PLAZA DELRAY MUPD

BEING A REPLAT OF SENECA PROPERTY MUPD, AS RECORDED IN PLAT BOOK 128, PAGES 138 AND 139, AND A PORTION OF TRACT 14 OF SECTION 20, THE PALM BEACH FARMS COMPANY PLAT NO. 1, AS RECORDED IN PLAT BOOK 2, PAGE 26, BOTH OF THE PUBLIC RECORDS OF PALM BEACH COUNTY, FLORIDA, LYING IN SECTION 20, TOWNSHIP 46 SOUTH, RANGE 42 EAST, PALM BEACH COUNTY, FLORIDA

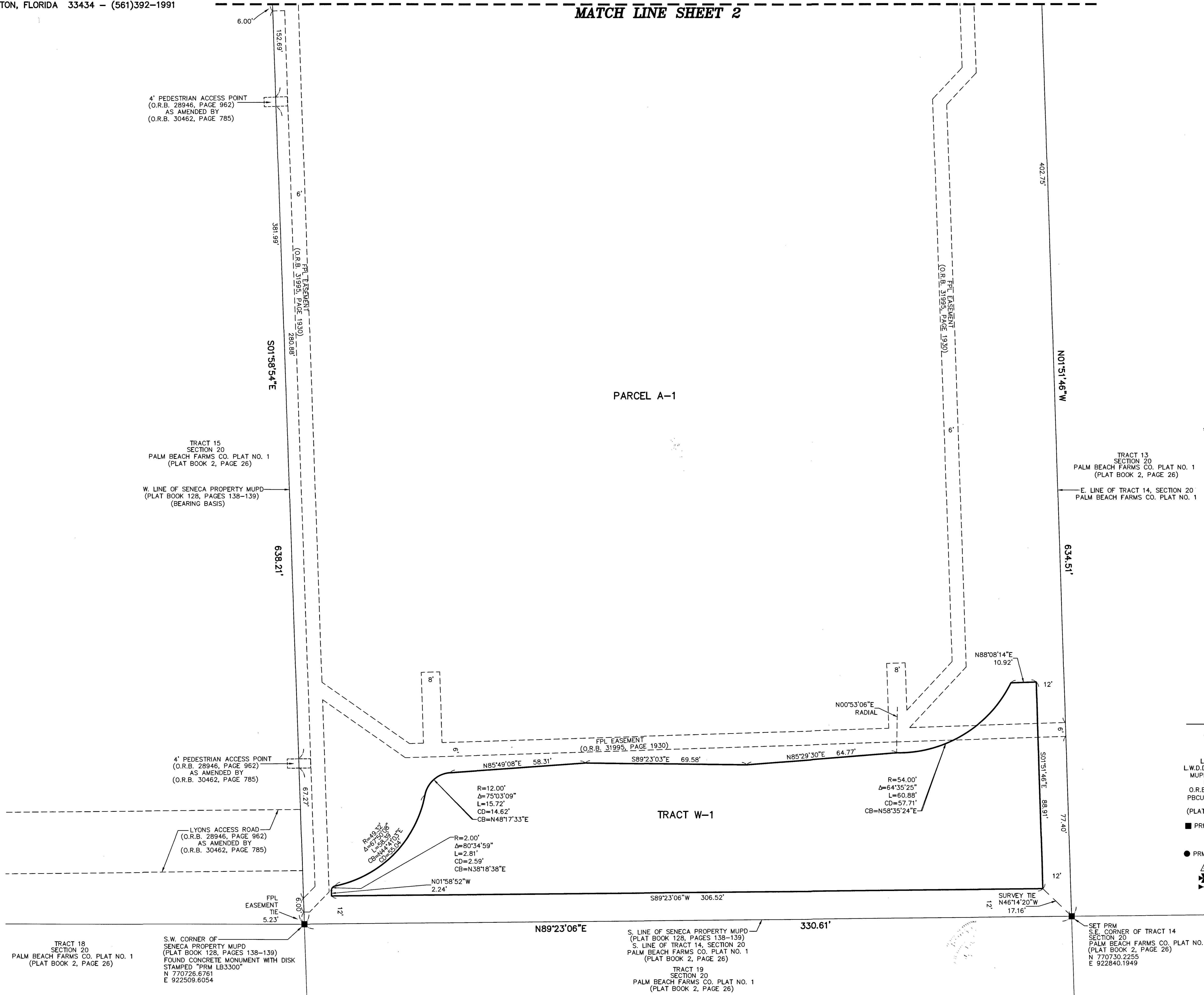
MATCH LINE SHEET 2

SHEET 3 OF 3



NOTES
COORDINATES, BEARINGS AND DISTANCES
COORDINATES SHOWN ARE GRID
DATUM = NAD 83 1990 ADJUSTMENT
ZONE = FLORIDA EAST
LINEAR UNIT = US SURVEY FEET
COORDINATE SYSTEM 1983 STATE PLANE
TRANSVERSE MERCATOR PROJECTION
ALL DISTANCES ARE GROUND UNLESS OTHERWISE NOTED
SCALE FACTOR = 1.000222084
GROUND DISTANCE X SCALE FACTOR = GRID DISTANCE
BEARINGS AS SHOWN HEREON ARE GRID DATUM,
NAD 83 1990 ADJUSTMENT, FLORIDA EAST ZONE.

LEGEND/ABBREVIATIONS
Δ - DELTA (CENTRAL ANGLE)
CB - CHORD BEARING
CD - CHORD DISTANCE
E - EASTING (WHEN USED WITH COORDINATES)
L - ARC LENGTH
LB - LICENSED BUSINESS
L.W.D.D. - LAKE WORTH DRAINAGE DISTRICT
MUPD - MULTI USE PLANNED DEVELOPMENT
N - NORTHING (WHEN USED WITH COORDINATES)
O.R.B. - OFFICIAL RECORD BOOK
PBCUE - PALM BEACH COUNTY WATER UTILITIES DEPARTMENT EASEMENT
R - RADIUS
(PLAT) - SENECA PROPERTY MUPD
PLAT BOOK 128, PAGES 138-139
■ PRM - DENOTES PERMANENT REFERENCE MONUMENT
SET 4" x 4" x 24" CONCRETE MONUMENT WITH
ALUMINUM DISK STAMPED "C&W PRM LB3591"
UNLESS OTHERWISE NOTED
● PRM - DENOTES PERMANENT REFERENCE MONUMENT
SET NAIL AND DISK STAMPED "C&W PRM LB3591"
Δ - DENOTES HORIZONTAL CONTROL POINT
⊕ - INDICATES SECTION CORNER
⊗ - INDICATES 1/4 SECTION CORNER



TRACT 18
SECTION 20
PALM BEACH FARMS CO. PLAT NO. 1
(PLAT BOOK 2, PAGE 26)

S.W. CORNER OF
SENECA PROPERTY MUPD
(PLAT BOOK 128, PAGES 138-139)
FOUND CONCRETE MONUMENT WITH DISK
STAMPED "PRM LB3300"
N 770726.6761
E 922509.6054

TRACT 19
SECTION 20
PALM BEACH FARMS CO. PLAT NO. 1
(PLAT BOOK 2, PAGE 26)

SET PRM
S.E. CORNER OF TRACT 14
SECTION 20
PALM BEACH FARMS CO. PLAT NO. 1
(PLAT BOOK 2, PAGE 26)
N 770730.2255
E 922840.1949

TRACT 20
SECTION 20
PALM BEACH FARMS CO. PLAT NO. 1
(PLAT BOOK 2, PAGE 26)